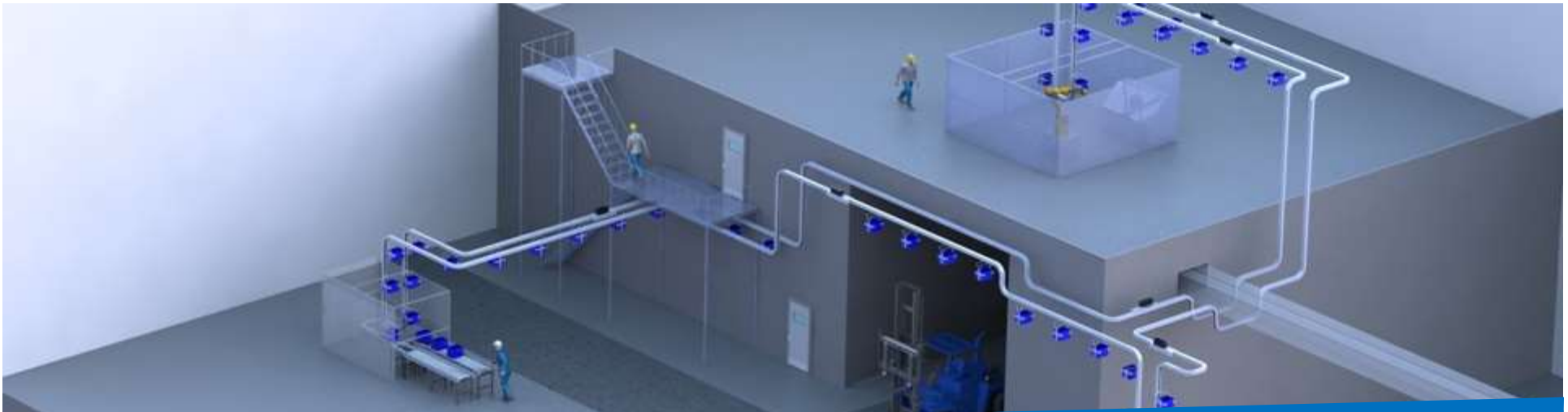


QuickMOVE

Flexible Transport Solutions



Quick MOVE – 3D Conveyor System

**Quick Move allows flexibility and
saves **you** space, time and costs!**

Quick MOVE – 3D Conveyor System

QuickMOVE
Flexible Transport Solutions

Quick MOVE – We transport different goods with independent trains where ever you want in- and outside your facility



Image source: Pixabay GmbH

Unique selling points



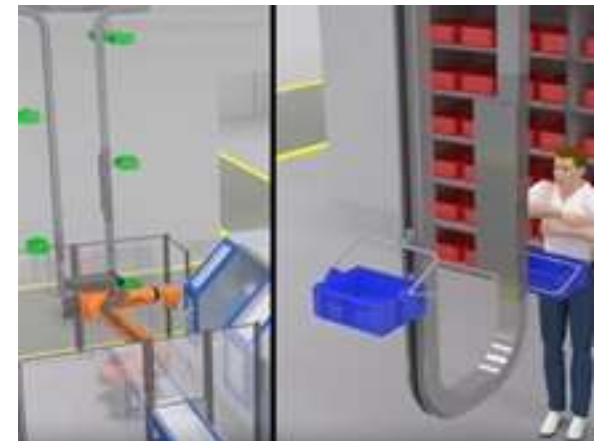
1. Fully flexible 3D- routing

Quick MOVE allows you to plan totally flexible, using three dimensions, horizontal, vertical, running through narrow curves – Quick MOVE allows optimal use of available space.



2. Flexible Timing of individual trains possible

Quick MOVE is working with individual controlled trains, which allows different speeds at loading and unloading points and start / stop operation. You can use your time efficiently, Quick MOVE prevents waiting time.



Unique selling points



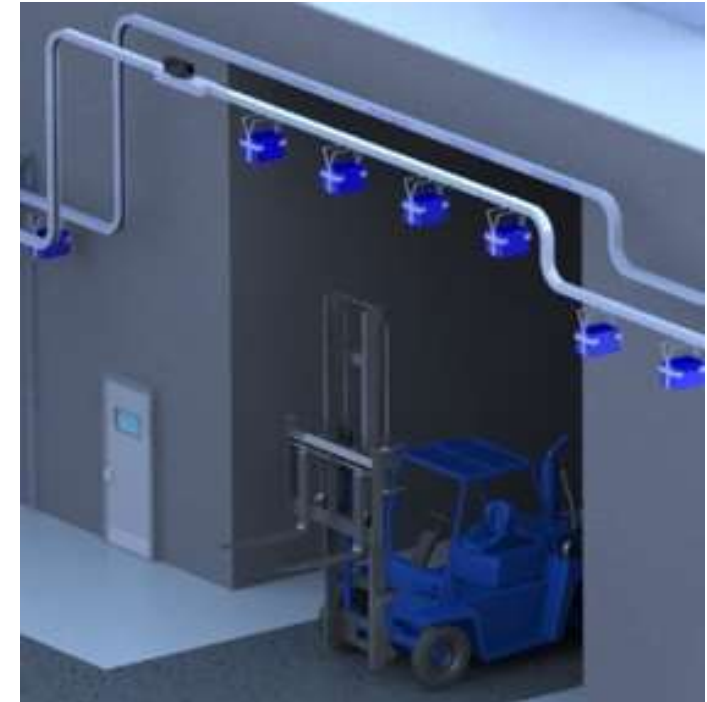
3. Convincingly economical

Purchase and operation are inexpensive, maintenance is low.
Flexible financing leads to savings.
Assembly and commissioning on weekends possible.

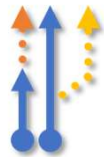


4. Walkways and paths always remain free

Quick MOVE bypasses every obstacle, even in narrow and built-up rooms. Due to the flexible 3D routing, space remains free.



Unique selling points



5. Short - medium - long - very long. As required!

Quick MOVE is uniquely flexible – due to the modular design, changes of the routing are easily possible also afterwards. The 3D conveyor system can be extended flexibly at any time.



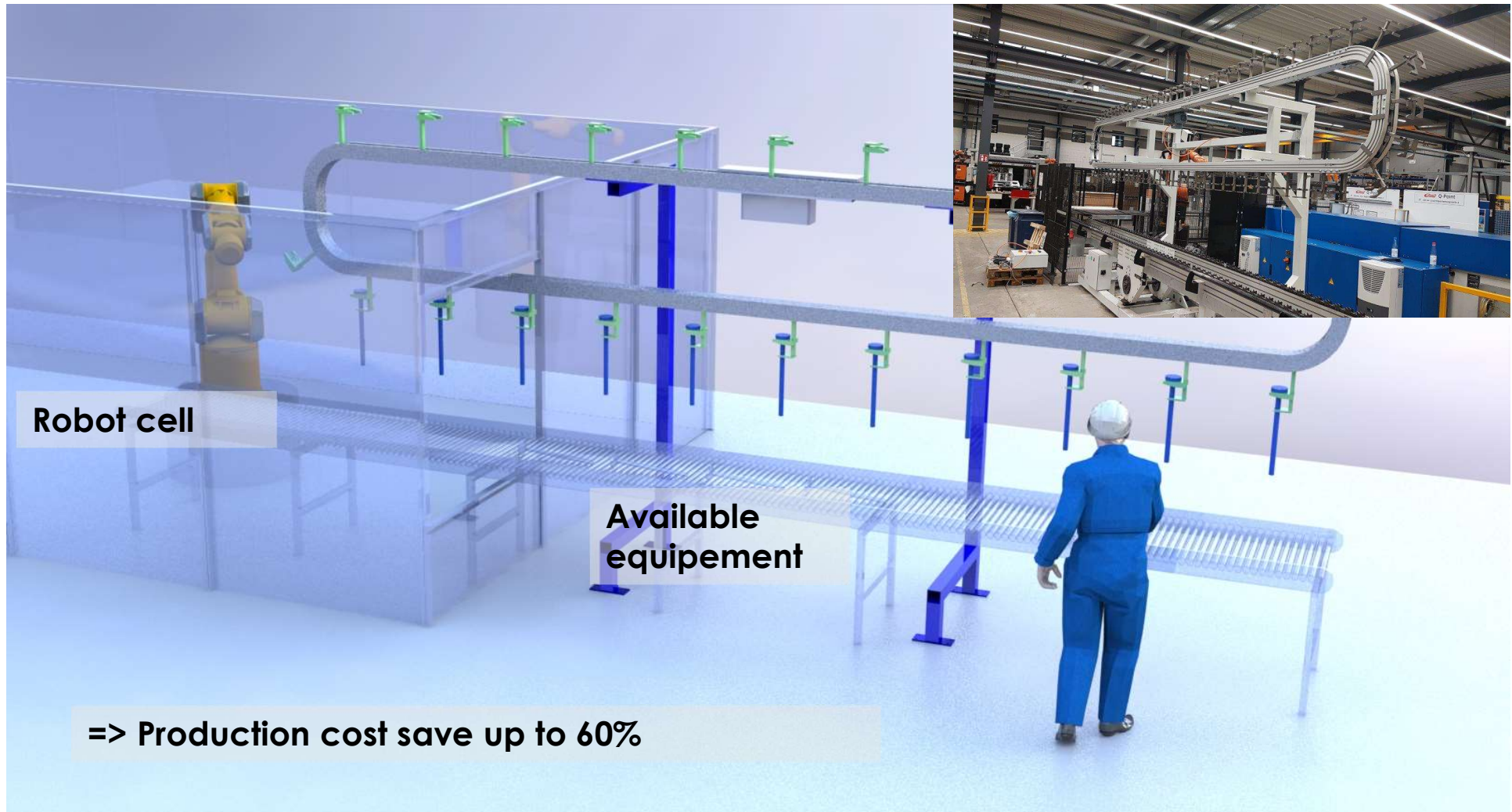
6. Combine with existing conveyor technology

You can connect Quick MOVE very easy with your existing conveyor systems. You will save additional transfer units and make good use of existing equipment.



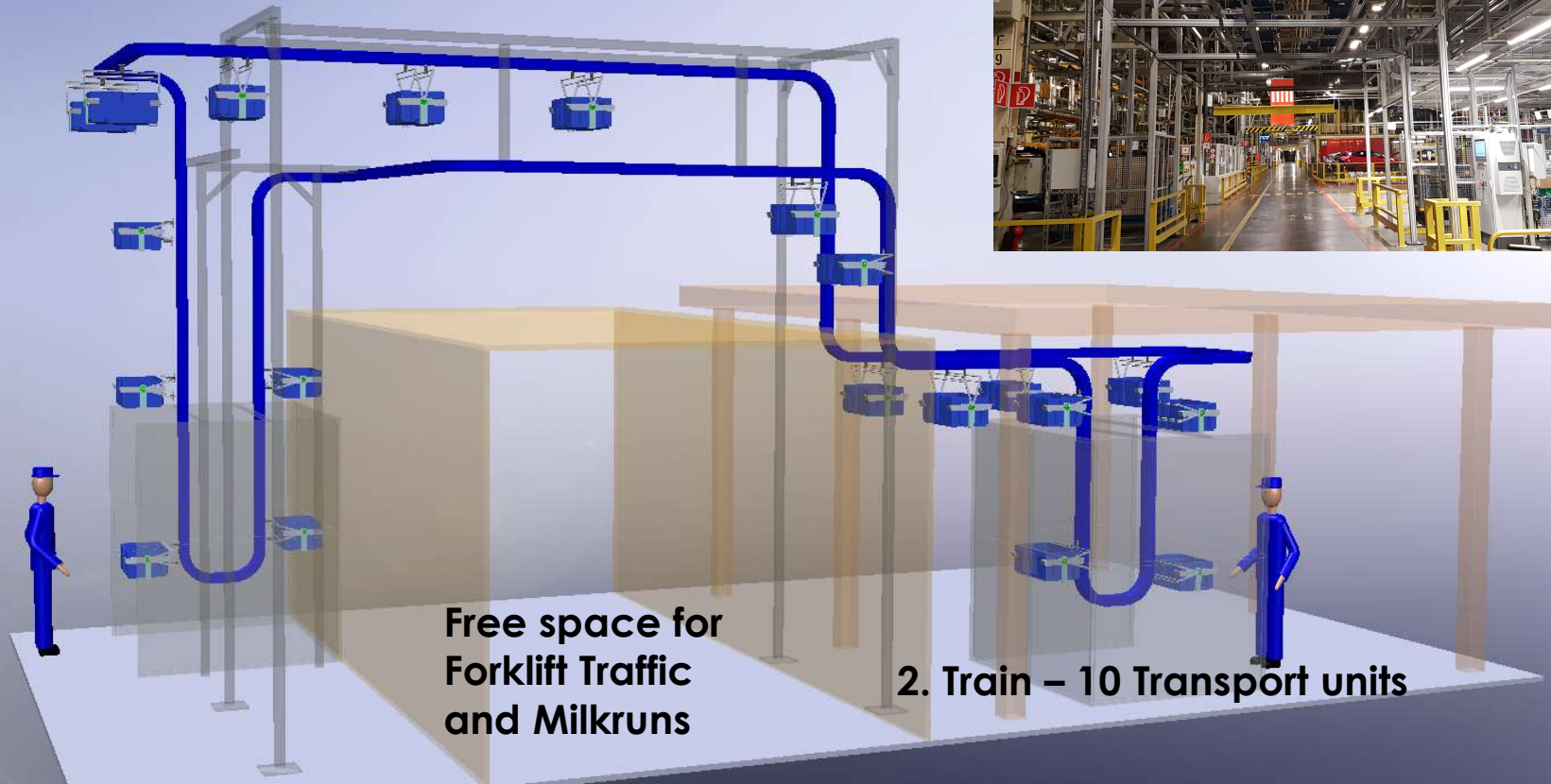
Customer Example 1:

Transport of hanging parts, out of an existing robot cell

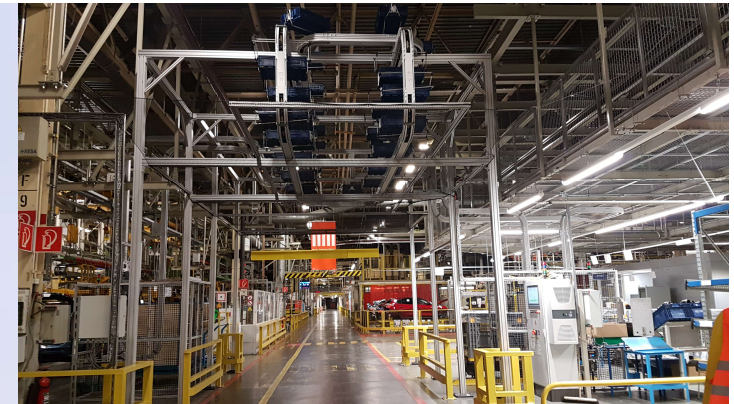


Customer Example 2: Transport between 2 manual workstations, by using 2 trains

1. Train – 10 Transport units

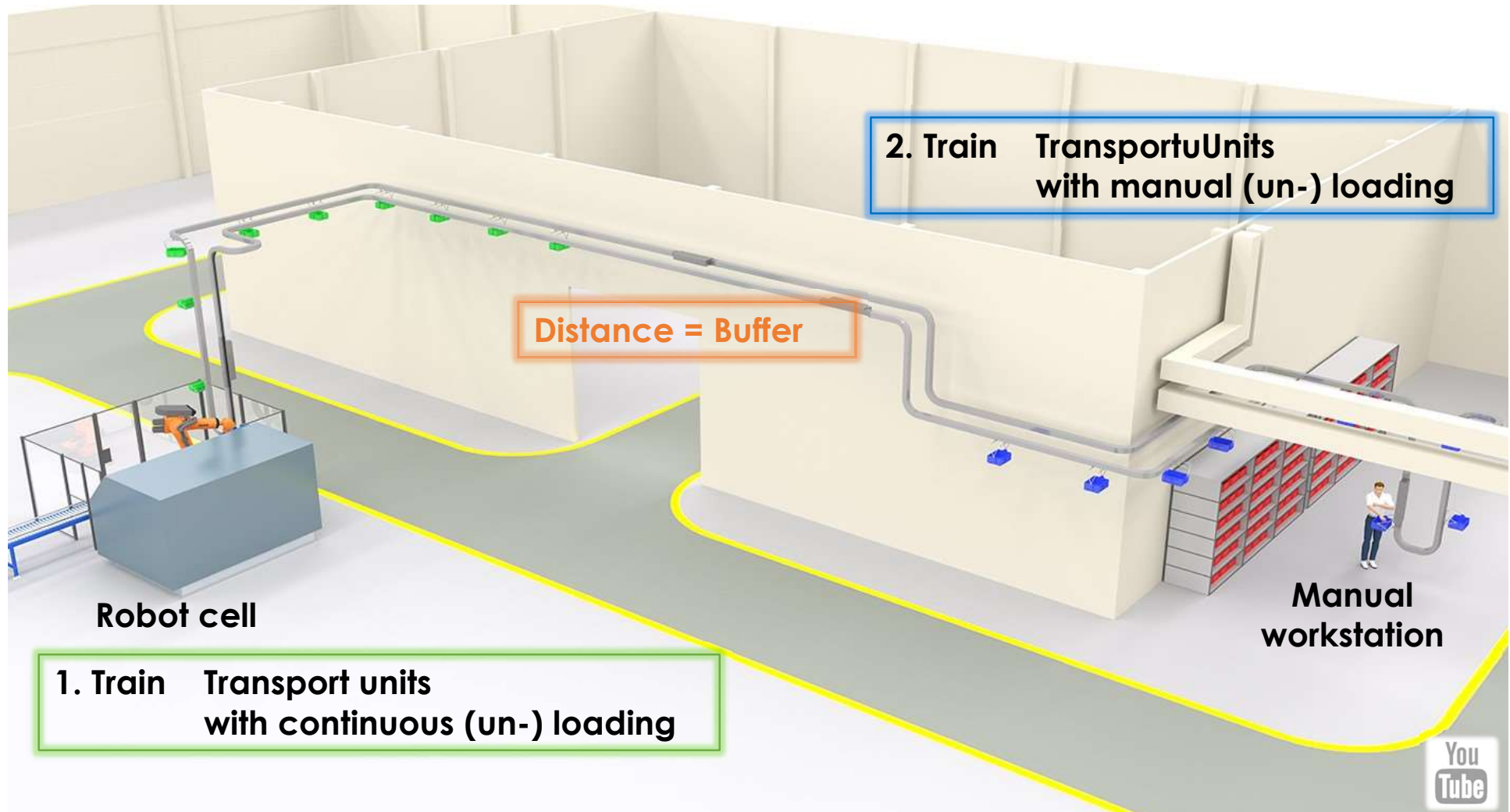


2. Train – 10 Transport units



Application Example 1:

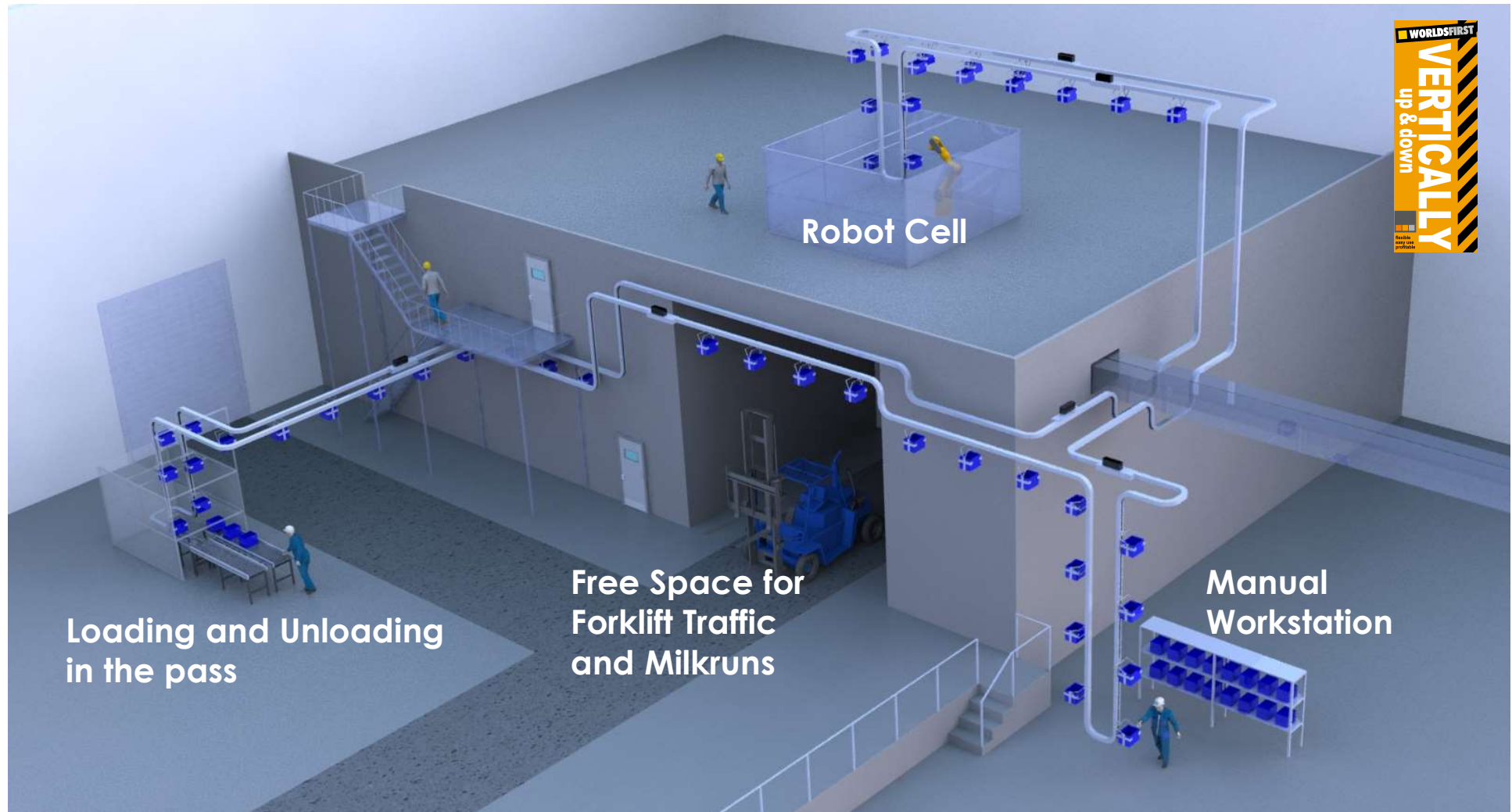
Transport with buffer from manual workstation to robot cell



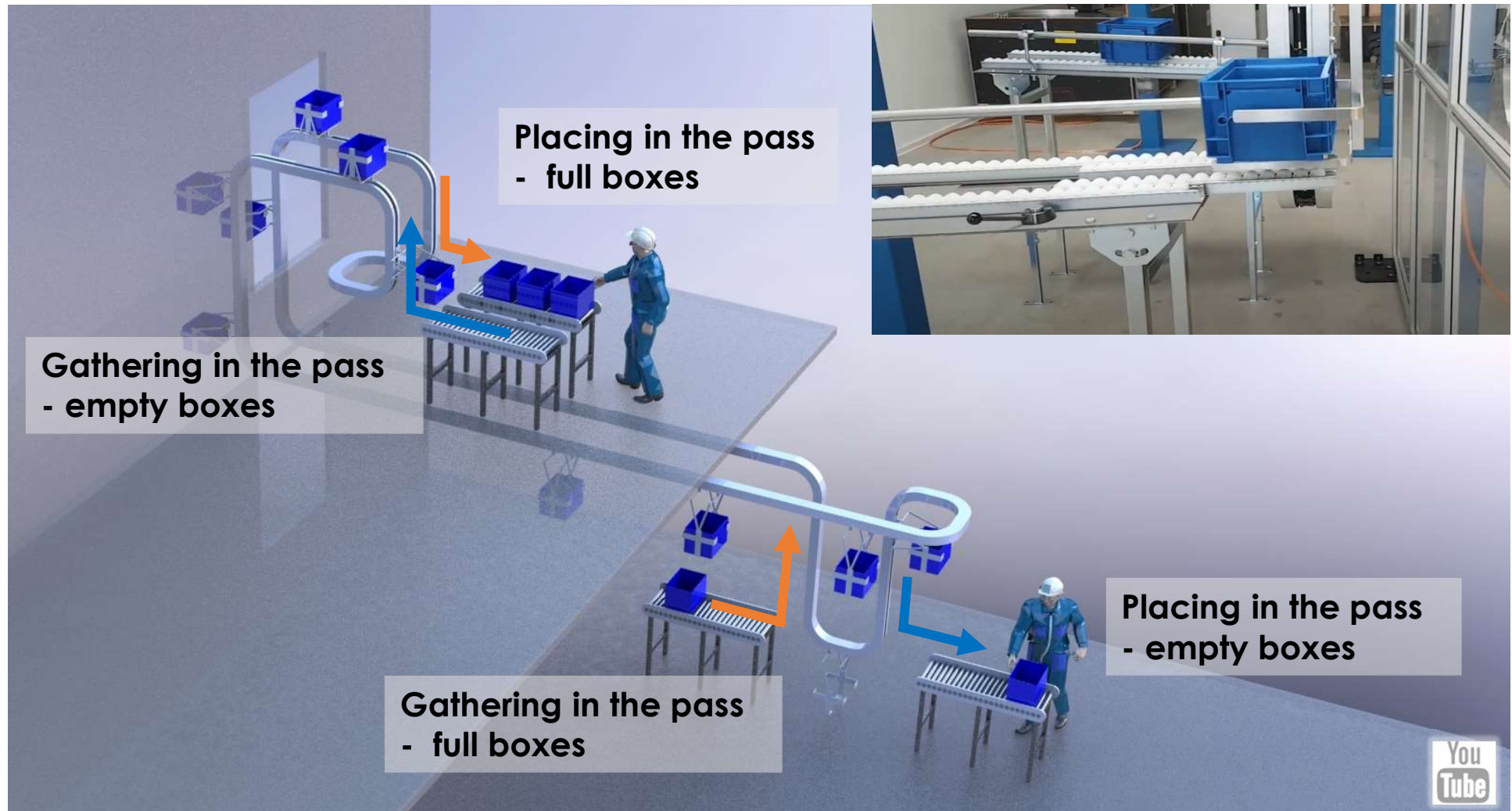
Quick MOVE – 3D Conveyor System



Application Example 2: Transport between 3 different workstations on different levels



Application Example 3: Connection of 2 workstations in 2 different floors



Technical Features:

- Speed is selectable and adjustable from 0.01 m/sec to 1.8 m/sec
- Loads up to 40 kg per transport unit
- Radii of min. 300 mm in all directions
- Height differences up to 10 m
- Decentralized drives
- Modular design, simple PLC programming and control



Freely selectable features, customer-specific designs:

- Route length unlimited
- Number of drives freely selectable
- Number of loading and unloading stations freely selectable
- Length of the trains is freely definable
- Number of trains freely selectable
- Customized transport units are freely configurable

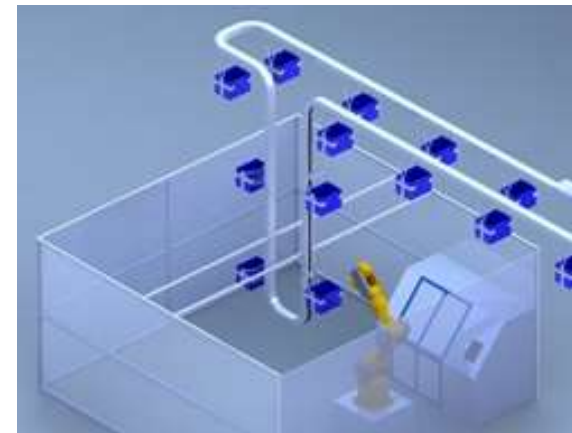
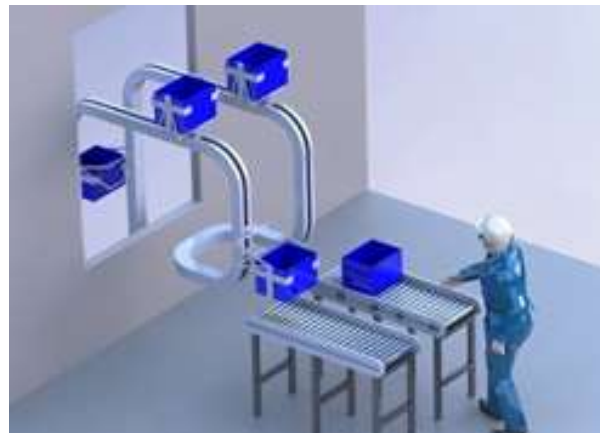


QuickMOVE Components

Loading and Unloading Stations

Manual loading and unloading, using a robot, or placing and gathering in the pass, with roller or belt conveyor

- Decide type and number of loading and unloading stations totally individual
- Plan the speed of loading and unloading at every station individually – cycle times of Quick MOVE trains are independent
- with Quick MOVE you can easily transport back empty containers



Quick MOVE Components

Track Switches

With the use of track switches the flexibility of goods transport can be further enhanced.

The transport units (workpiece carriers) of a train can be loaded or unloaded at any place by hand or automatically.

Trains can also be parked on "side routes". This means that any design and number of ancillary routes can be used to integrate "marketplaces" or storage places into the conveyor system.



Quick MOVE Components

Aluminum Guideway

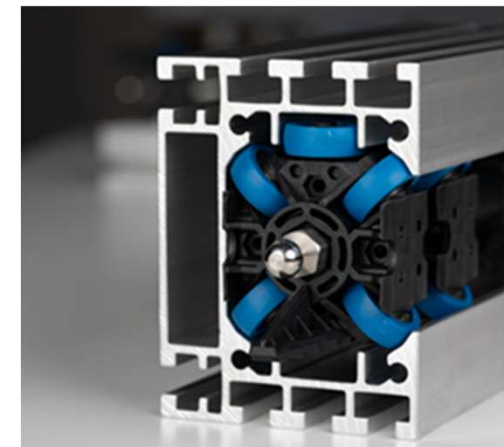
The straight and curve segments consist of extruded anodized aluminum profiles.

The curve segments have min. 300 mm radius and can be customized as required.

Trains and Drives

The trains consist of any number of wagons connected with ball joints.

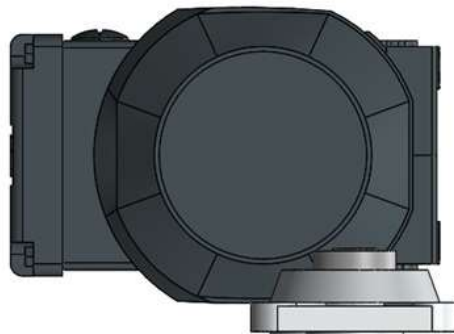
A so-called driver element ensures the toothing with the drive belt and that the train is pulled or pushed.



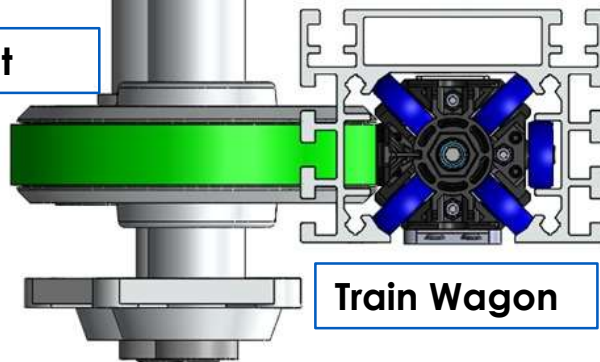
Quick MOVE Components

Trains and Drive System

Motor and Gearbox



Drive Belt



Train Wagon



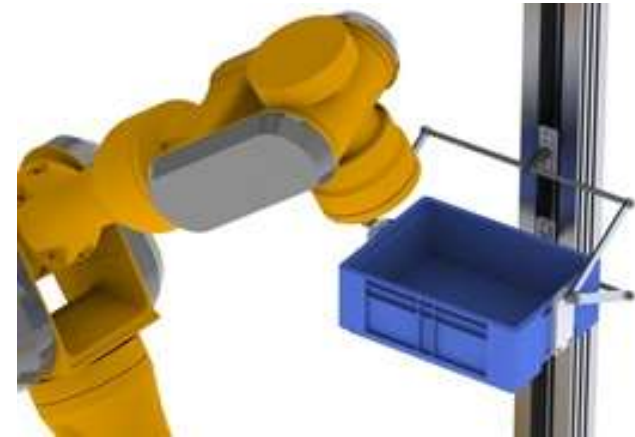
Quick MOVE Components

Transport Units

The transport units (workpiece carrier) are mounted on wagons of the train. They are individually designed according to the customer specific application. A transport unit can be mounted per wagon, at a distance of 200mm.

Choose your individual transport unit:

- Fixed boxes, for loading by hand or with a robot
- Removable boxes, for loading and unloading in the pass
- Hooks, for hanging the goods
- Transport unit with a tray, to lay down bulky goods



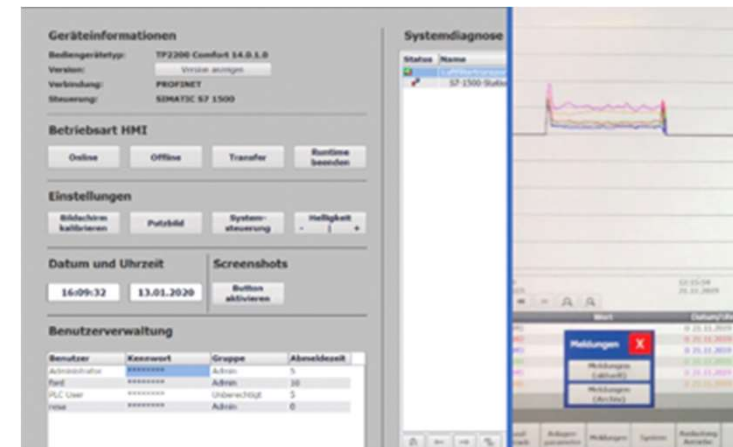
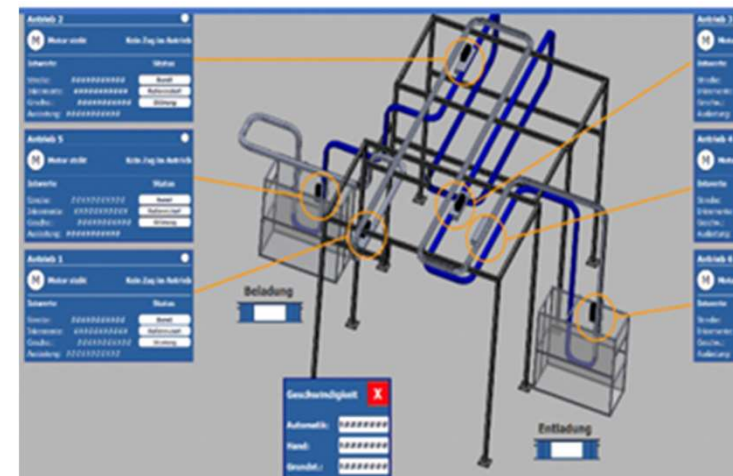
Quick MOVE Components

PLC Control System

Quick MOVE is controlled by a modular PLC programming, which can be individually extended and adapted with minimal effort.

The Motor Drive Systems can be accelerated and positioned as required with the PLC unit.

Systems for Predictive Maintenance and Industry 4.0 have been implemented in customer projects several times.



About Quick MOVE

- We develop, plan and build our patented Quick Move conveyor system according to your requirements at our two locations.

- Our business activities:

Turnkey Systems

Delivery of Quick MOVE
components

Quick MOVE for rent

- Quick MOVE is member of  – Section “Materials Handling and Intralogistics”



Get to know the companies of the Goffin Group!



The Goffin Holding GmbH acquires strategic holdings in the industrial environment and finances the creation of companies with innovative and sustainable products or ideas. The Quick Move GmbH is a subsidiary of the Goffin Holding GmbH.

Goffin Holding GmbH

Together with the acquired companies Goffin is responsible for the strategic positioning, the development and the industrialization of the products and ideas up to the successful market positioning.
This ensures the successful future of the acquired companies.

Goffin Consult
GmbH



DeVeTec
GmbH



Quick Move
GmbH



Goffin Energy
GmbH



With our patented Quick Move conveyor system and the long experience of our employees in the field of mechanical engineering and the automotive industry, you get the optimal solution for your specific application case.

Our services include complete project management from planning to installation and start-up of the equipment. Of course, we also take care of the maintenance if you wish, but there is little to do here.

Quick MOVE GmbH

Rheingasse 34 . 50676 Köln

Phone +49 (0) 221 39760 0

Fax +49 (0) 221 39760 299

www.quick-move.de

Thomas Brüse

Managing Director

Mobile +49 (0) 160 535 8679

thomas.bruese@quick-move.de

