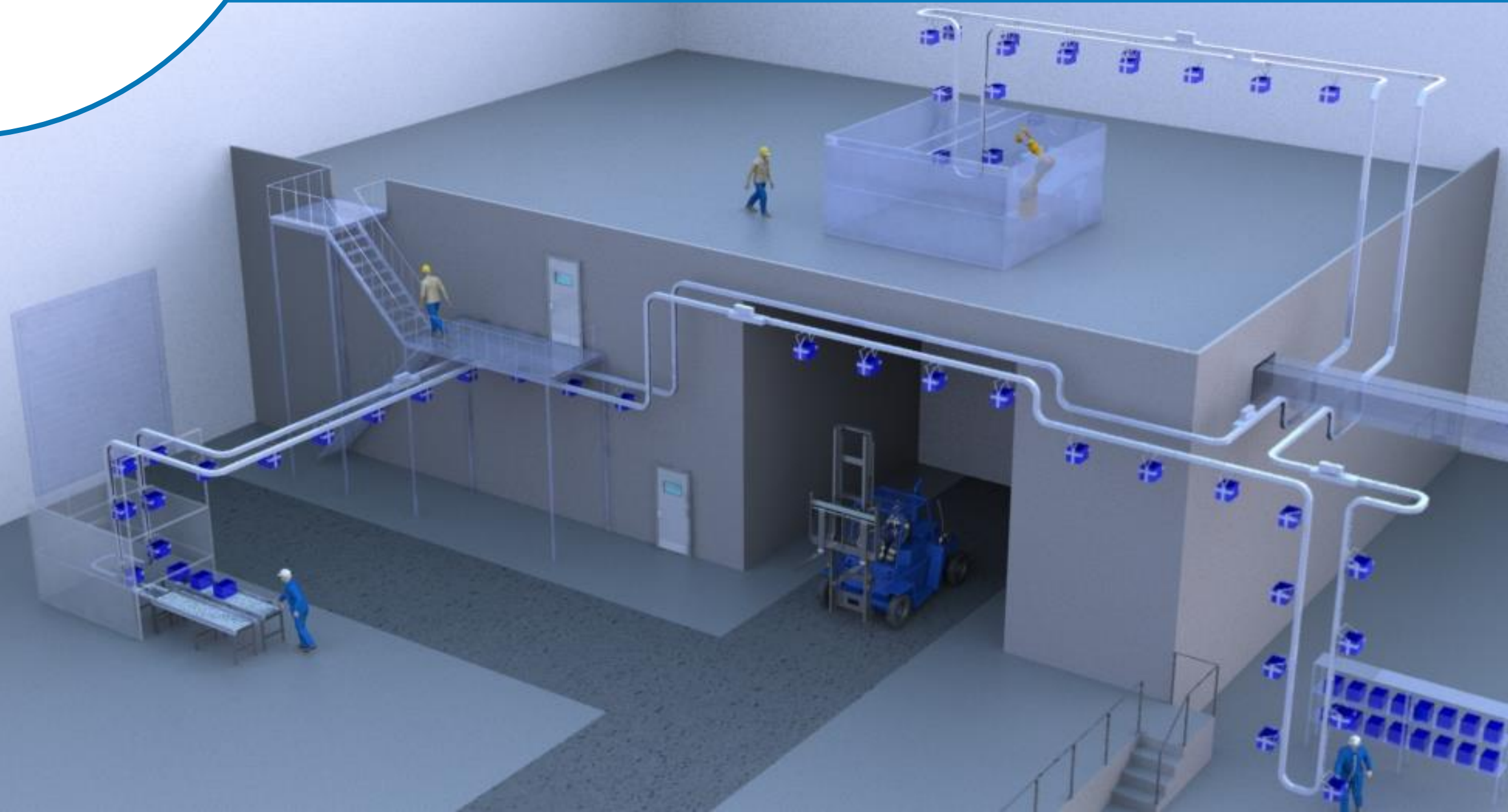




Flexibility, efficiency, and
smart use of space –
redefined with **QuickMOVE**





QuickMOVE enables the transport of of various goods with free trains and transport units to any destination in 3D.



Technical Data: QuickMOVE & QuickMOVE Evolution

Feature	QuickMOVE (QM)	QuickMOVE Evolution (QE)
Speed	0,01 m/s to 1,8 m/s	0,01 m/s to 1,8 m/s
Maximum Load	Up to 40 kg per Unit	Up to 10 kg per Unit
Minimum Radius	300 mm	200 mm
Height Differences	Up to 10 m (one drive)	Up to 6 m (one drive)
Positioning Accuracy	± 0,5 mm	± 0,05 mm (X/Y/Z)

Modularity: Decentralized drives; simple PLC control and programming

System Variants:

QM: Standard 200 mm

QE: Standard 160 mm

-> Expandable via adapters (e.g., for clothes hangers, etc.)



1. Flexible 3D routing

Horizontal, vertical, tight curves or inclines – QuickMOVE makes optimal use of space and easily navigates around obstacles.
→ The floor remains free for other purposes.

2. Independent units

Each transport unit can be individually controlled – with its own speed, start/stop, and route.
→ Ensures efficient use of staff and machinery.

3. Modularly expandable

From short to very long – QuickMOVE grows with your needs.
→ The modular design allows quick adjustments and expansions.

4. Economical in operation

Cost-effective in setup, installation, and maintenance – even weekend commissioning is possible.
→ Saves time, costs, and energy.

5. Compatible

Easy integrated into existing systems – no additional transfer units required.
→ Existing equipment can be continuously used.

QuickMOVE components:

Guide rail

The straight and curved segments are made of extruded, anodized aluminum profiles.

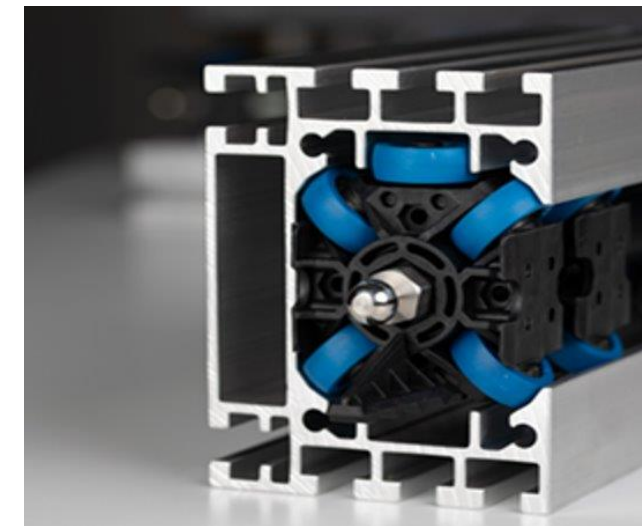
The curved segments have a min. 300 mm radius and can be flexibly adapted to any route layout.

Trains and drives

Each train consists of a variable number of wagons connected with joints.

A teeth segment engages with the drive belt, ensuring the train is pulled or pushed along the track.

QM

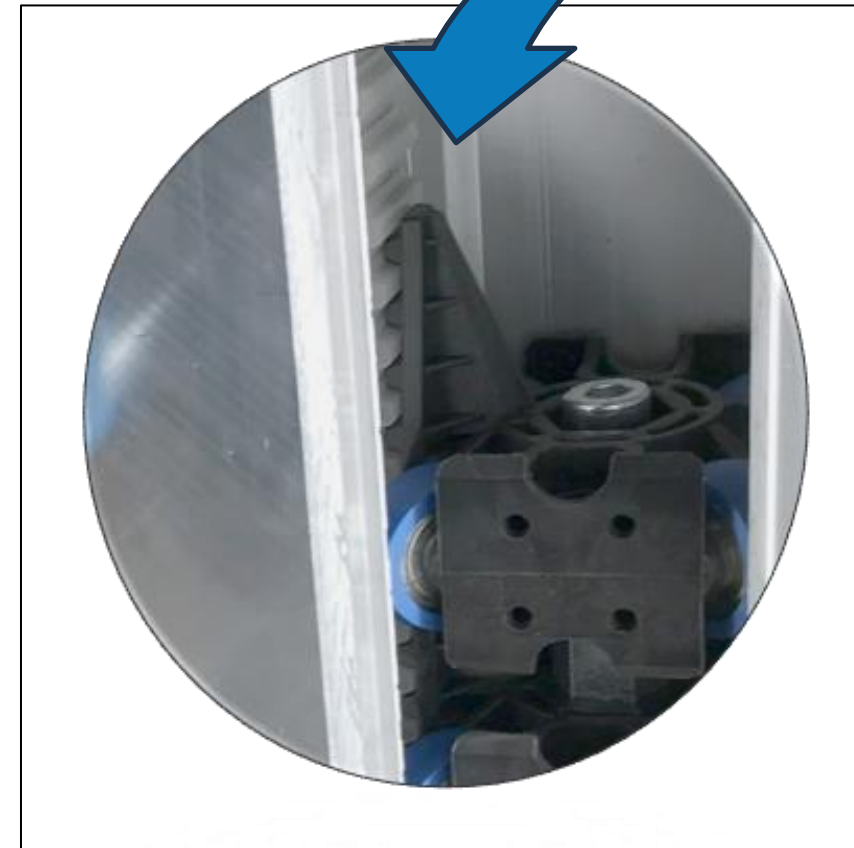
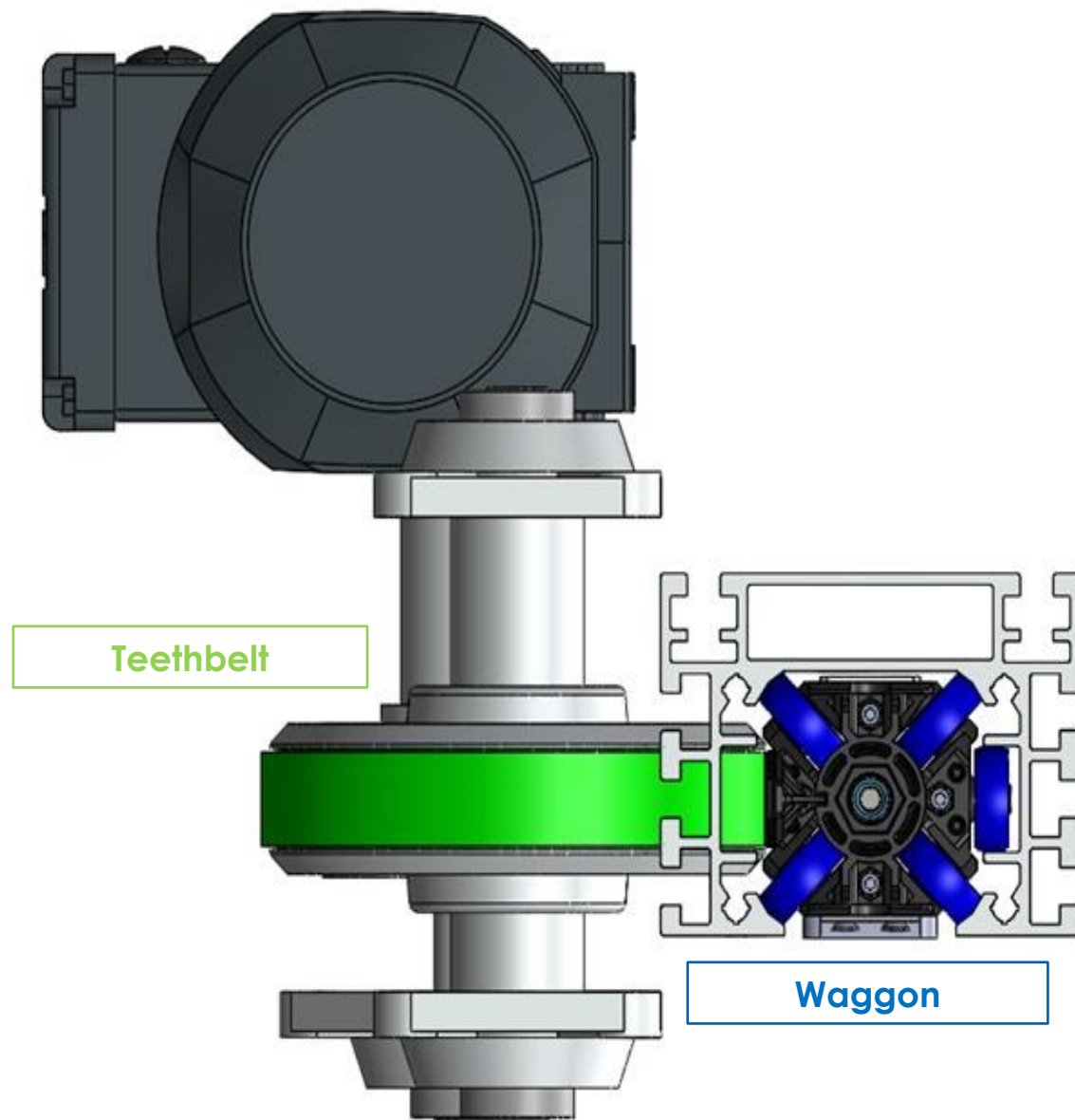


QE



QuickMOVE components: Trains and drives

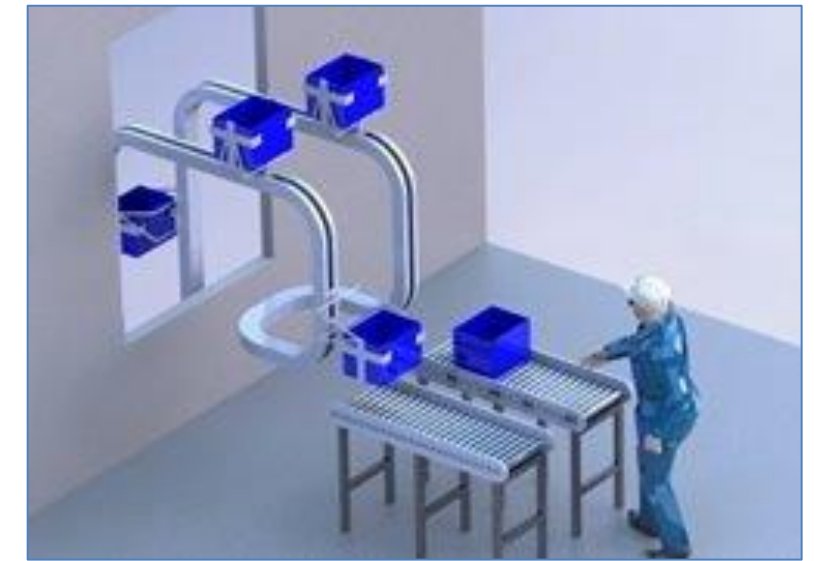
Motor with gearbox



QuickMOVE Components: Loading and unloading stations

Flexible loading and unloading, manual, automated, or in-line, from robotic assembly to point-to-point interlinking.

- Plan the number and type of loading and unloading stations according to your needs.
- Determine the speed and sequence of each station independently of the cycle.
- Empty containers are returned automatically and efficiently.



QuickMOVE Komponenten: Weichen

Switches can be used to further increase the flexibility of goods transport.

The transport units of a train can be loaded and unloaded at any point (manually or automatically).

In addition, trains can be parked on branch lines to integrate additional marketplaces or storage areas into the conveyor system.



QuickMOVE Components: Transport units

Select the appropriate design:

Fixed boxes

- for manual or robotic loading

Removable boxes

- for continuous loading and unloading

Hook modules

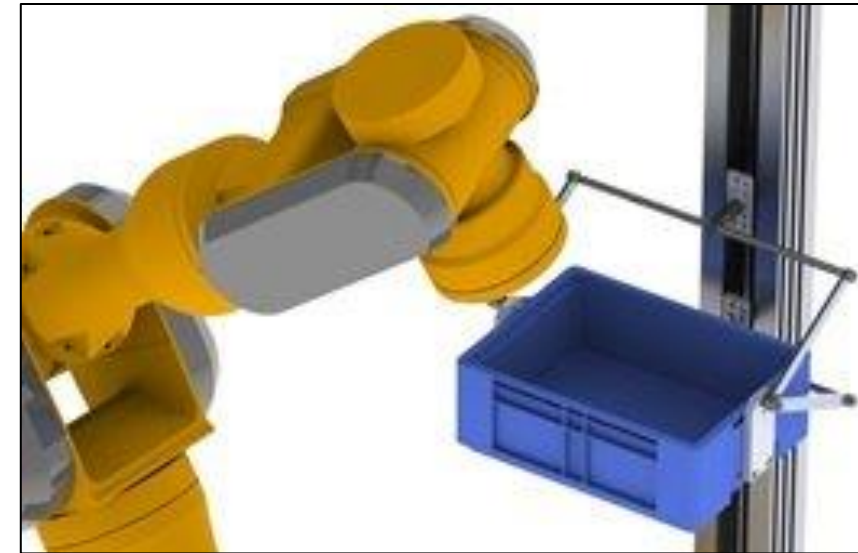
- For hanging goods

Storage units

- for bulky or large-format goods

Customized solutions

- tailored to your specific requirements



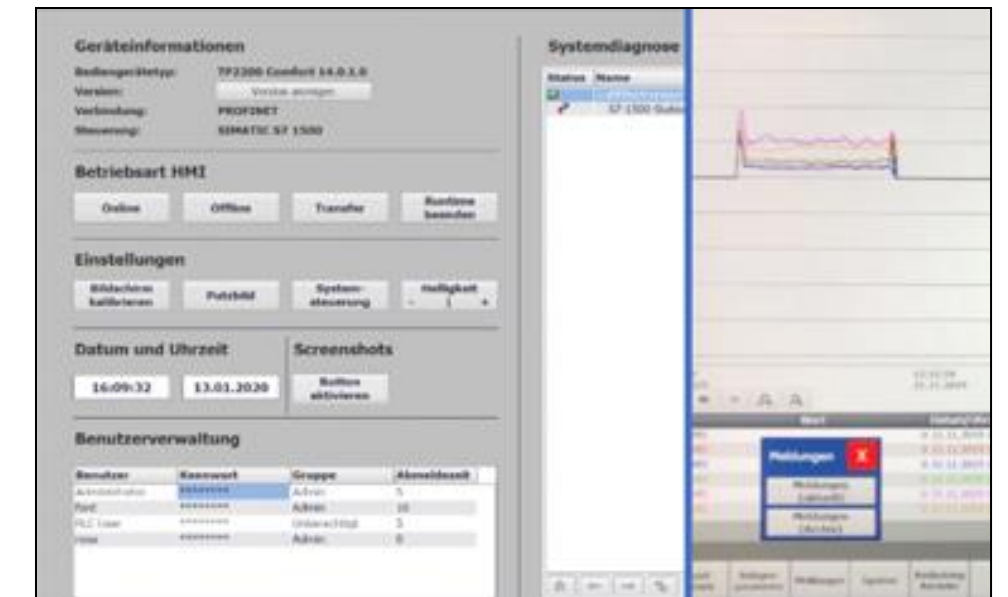
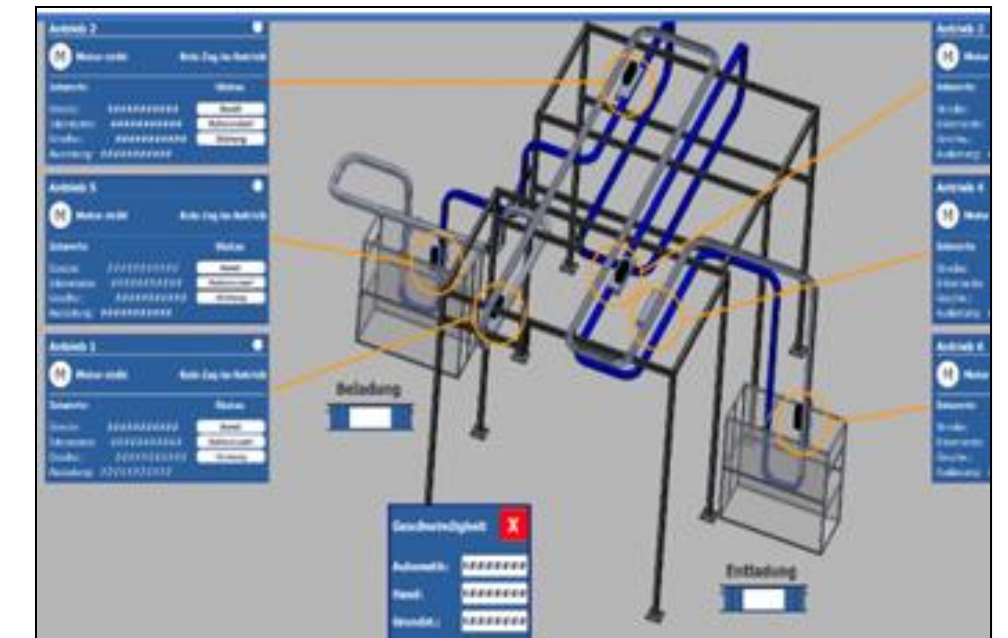
Individually customizable transport units in a 200 mm grid.

QuickMOVE Komponenten: Steuerung

QuickMOVE control is based on modular PLC programming that can be flexibly expanded and adapted to customer-specific requirements.

The drives are precisely positioned via frequency converters and the pulling speeds are precisely controlled.


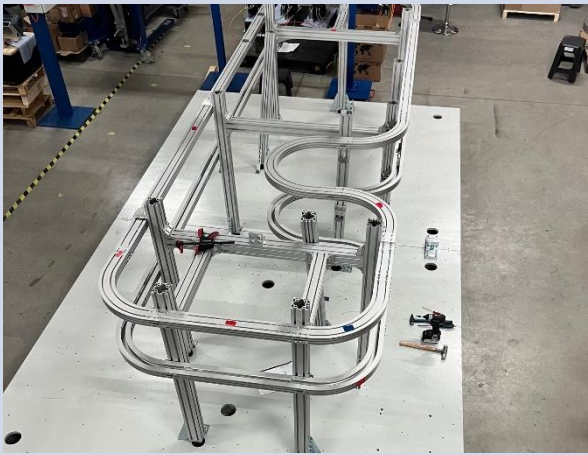
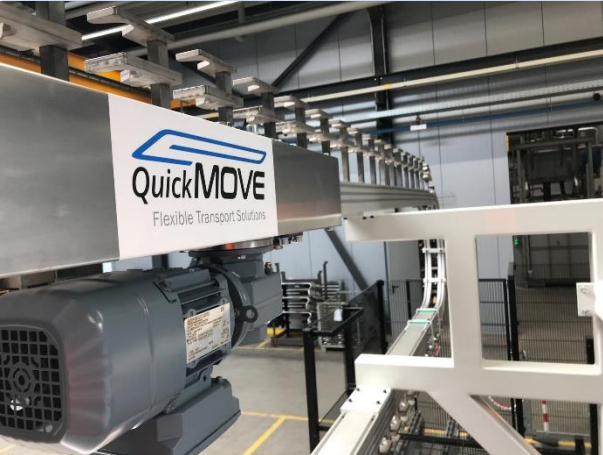


Functions such as connection to a central plant management system or condition-based maintenance are part of the Industry 4.0 modular system and have already been implemented on several occasions.








Case studies: Our solutions in action

- From planning to commissioning: QuickMOVE demonstrates what flexibility means.
-

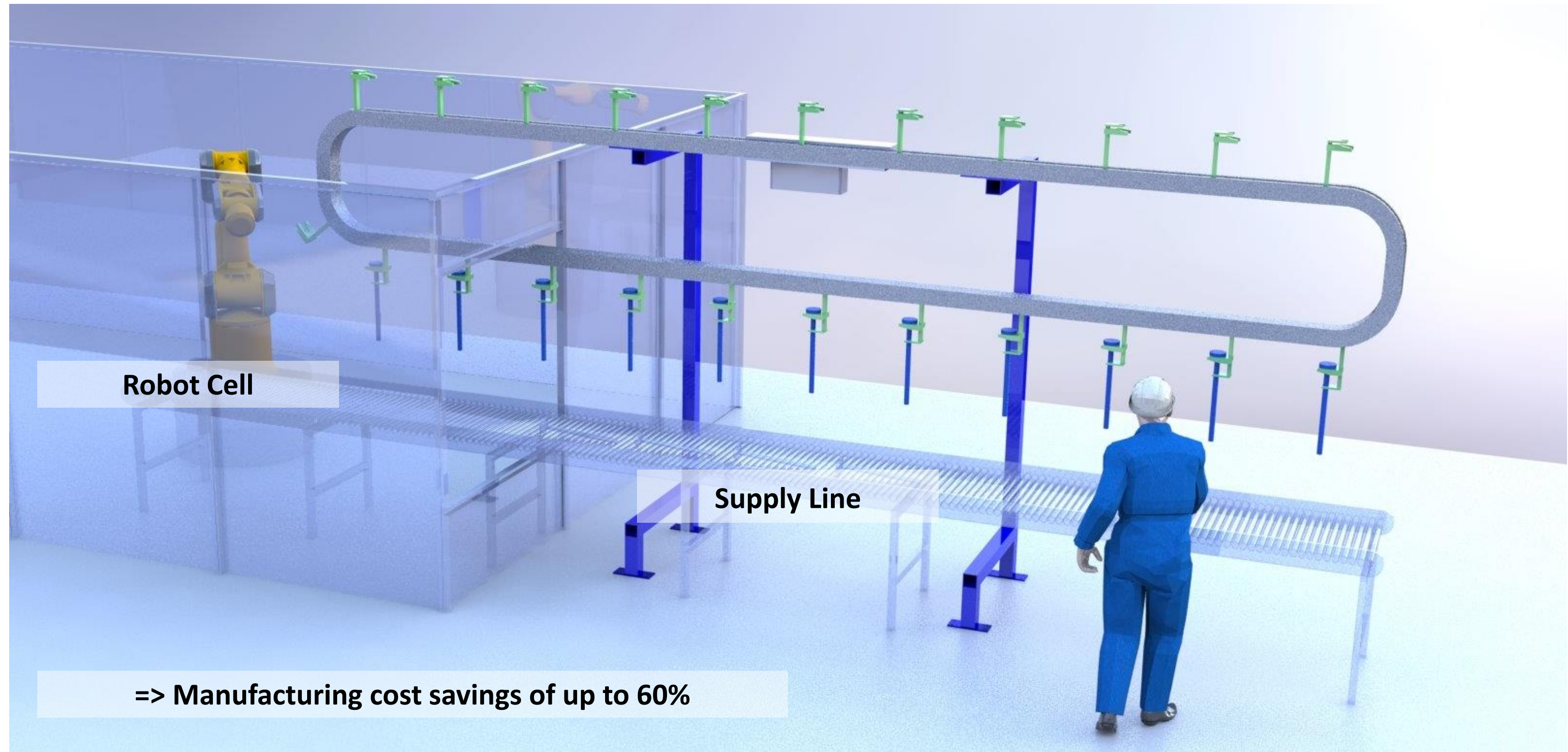
Our Use Cases

	Use Case 1 QM	Use Case 2 QE	Use Case 3 QM	Use Case 4 QE	Use Case 5 QM
Application image					
Field of application	End assembly of vehicles	Battery cell production	Driveshaft production	Biotech Produktion	Components
Transport weight	4 kg	4 kg	10 kg	2 kg	22,5 kg
Load capacity per train	80 kg	116 kg	300 kg	132 kg (loop)	90 kg
Track length	90 m	2 X 12 m	15 m	33 m	66 m
Number of TU / Trains	20	29	72	66	4
Loading of transport units (TU)	Manually with BWS	Using Robot	Using robots	Manually (safety speed)	With a conveyor belt in continuous operation
Unloading of transport units	Manually with BWS	Synchronous gripper	Manually	Manually (safety speed)	Using robots

Our Use Cases

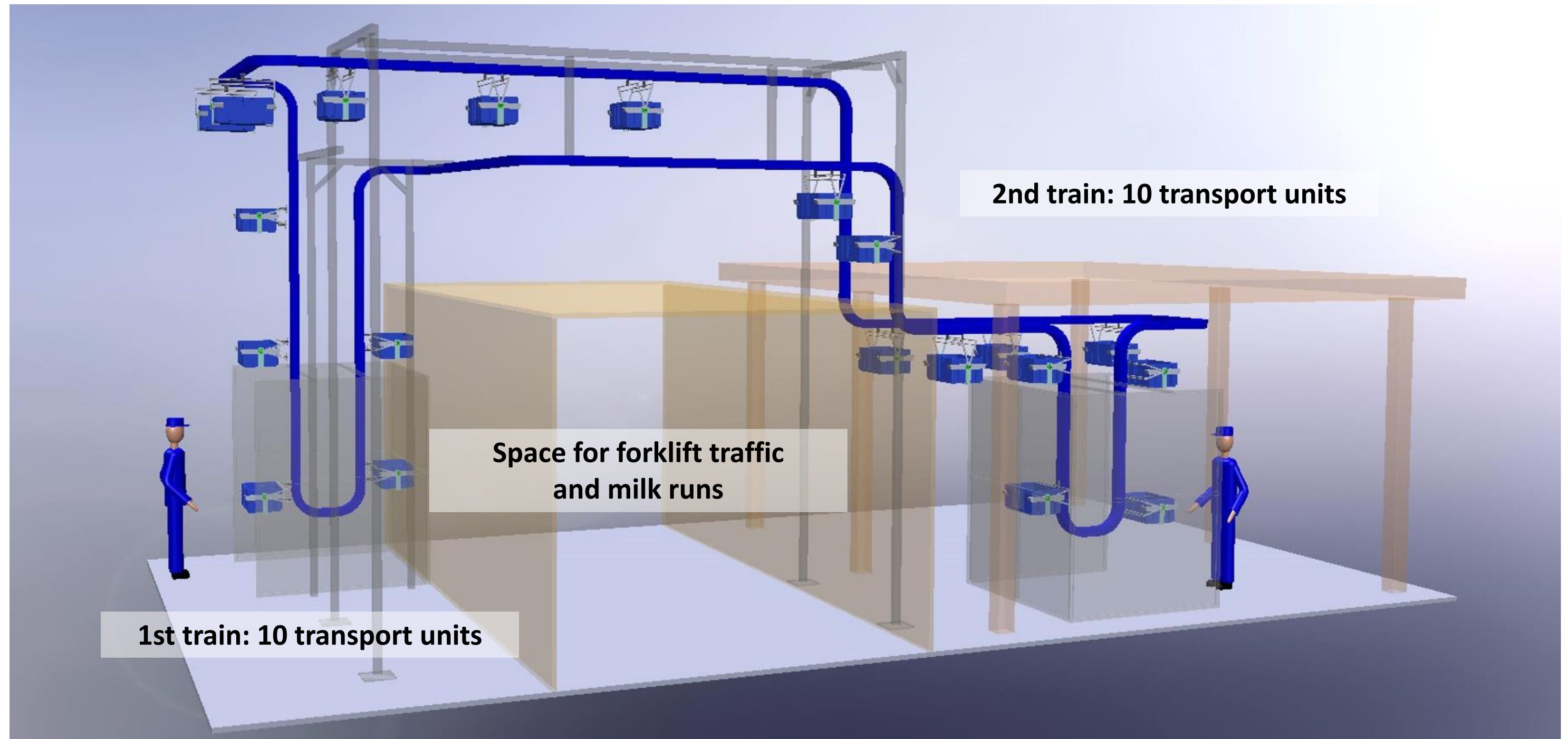
	Use Case 6 QM	Use Case 7 QE	Use Case 8 QM	Use Case 9 QM	Use Case 10 QM
Application image					
Field of application	Electronics production (ESD)	Logistik MultiPak	Paintshop vehicle assembly	Engine assembly	Vehicle assembly
Transport weight	20 kg	100 g	14 kg	3 kg	7,5 kg
Load capacity per train	140 kg	5 kg	280 kg	48 kg	90 kg
Track length	66m & 46 m	70m	700 m	2x 120 m	2x 350 m
Number of TU / Trains	7	50	20	16	12
Loading of transport units (TU)	Conveyor & lift	Automatically from machine	Manually (safety speed)	Using robots	Synchronous drive (0,5m/s)
Unloading of transport units	Manually with BWS	Automatic drop-off	Manually (safety speed)	Manually with BWS	Using robots

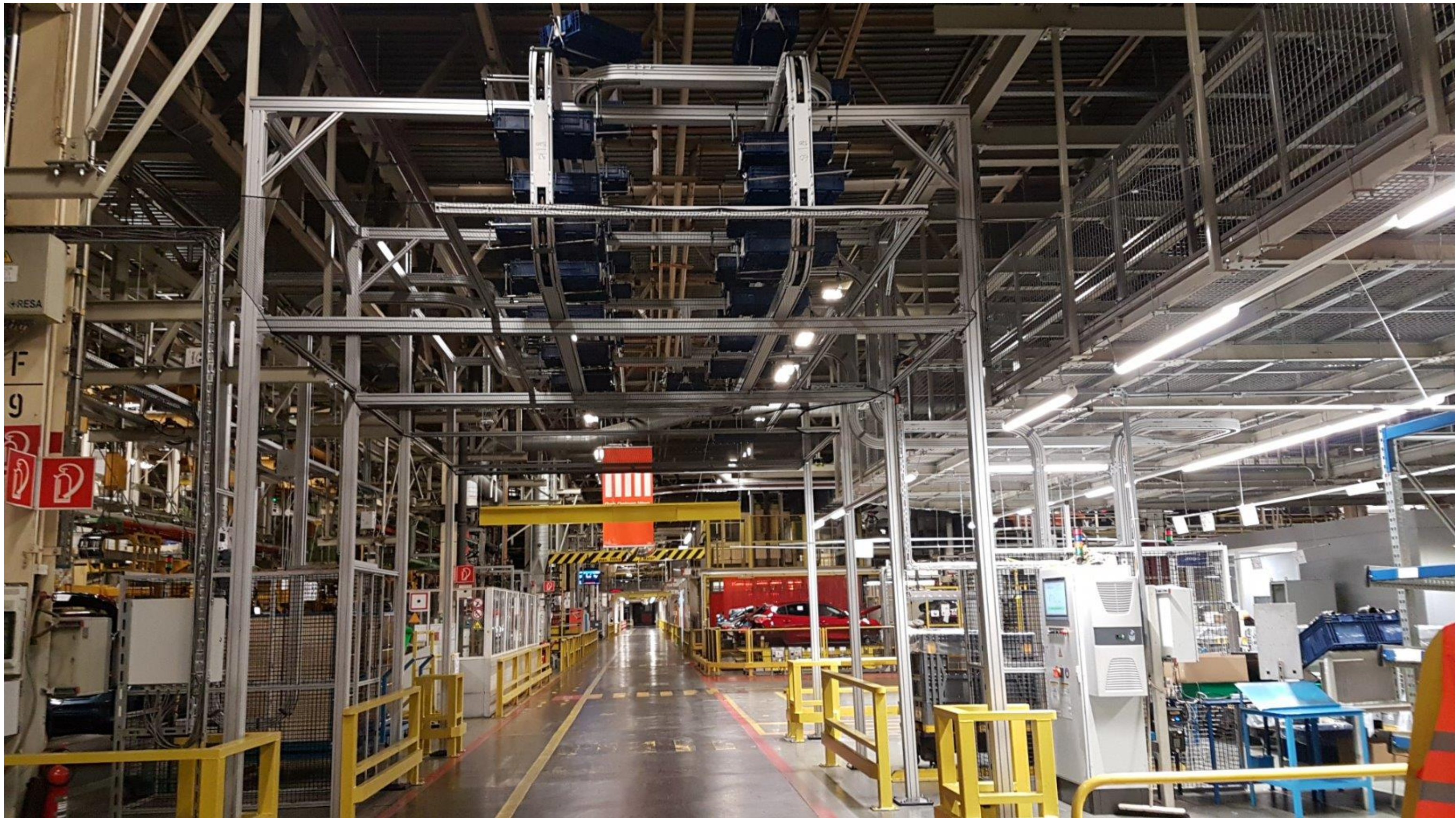
Usecase 3: Driveshaft production - Hanging transport of parts from an existing robot cell



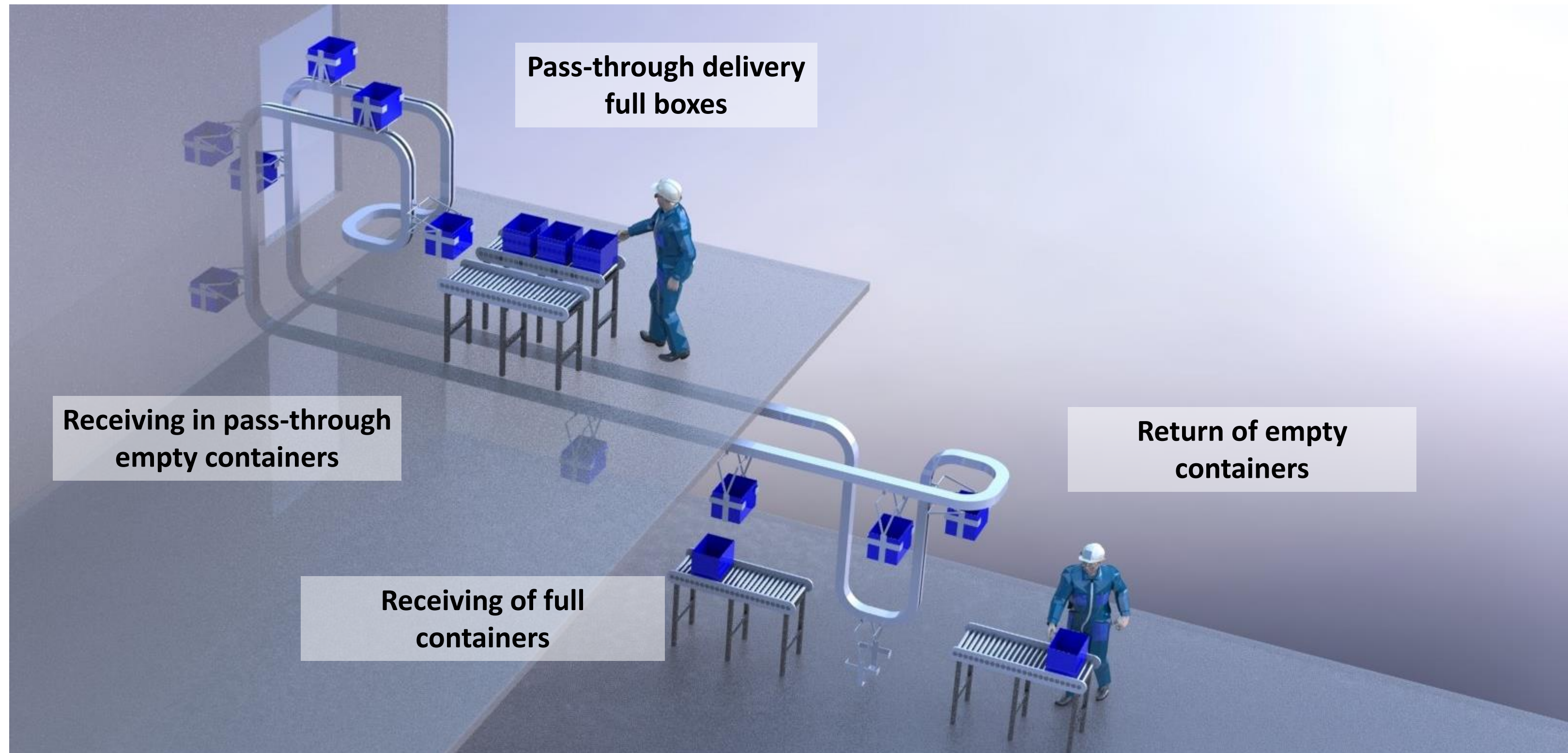


Usecase 1: Assembly Line - Transport between two manual workstations with two trains





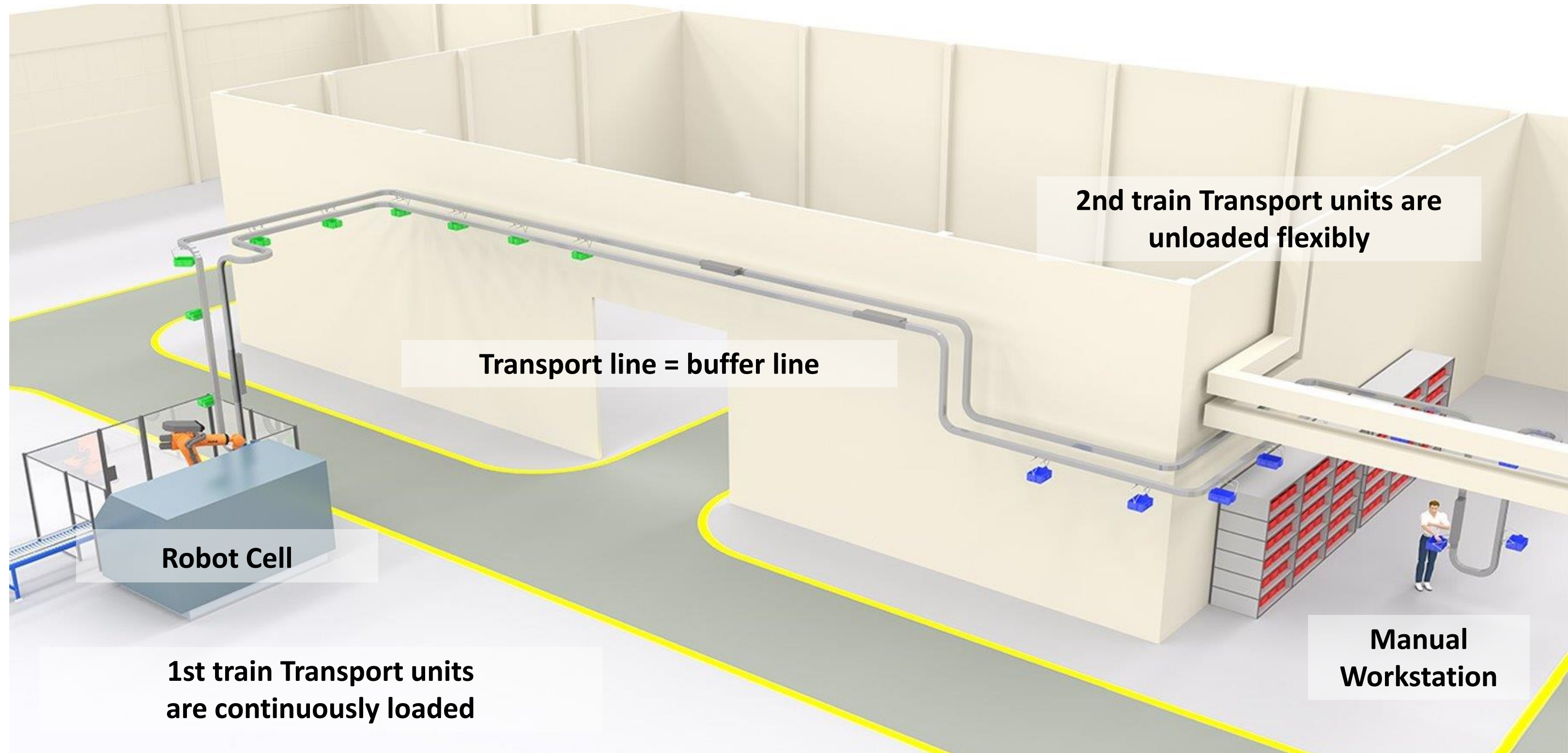
Application example 3: Transferring boxes in and out, connecting two workstations on two different floors with buffers



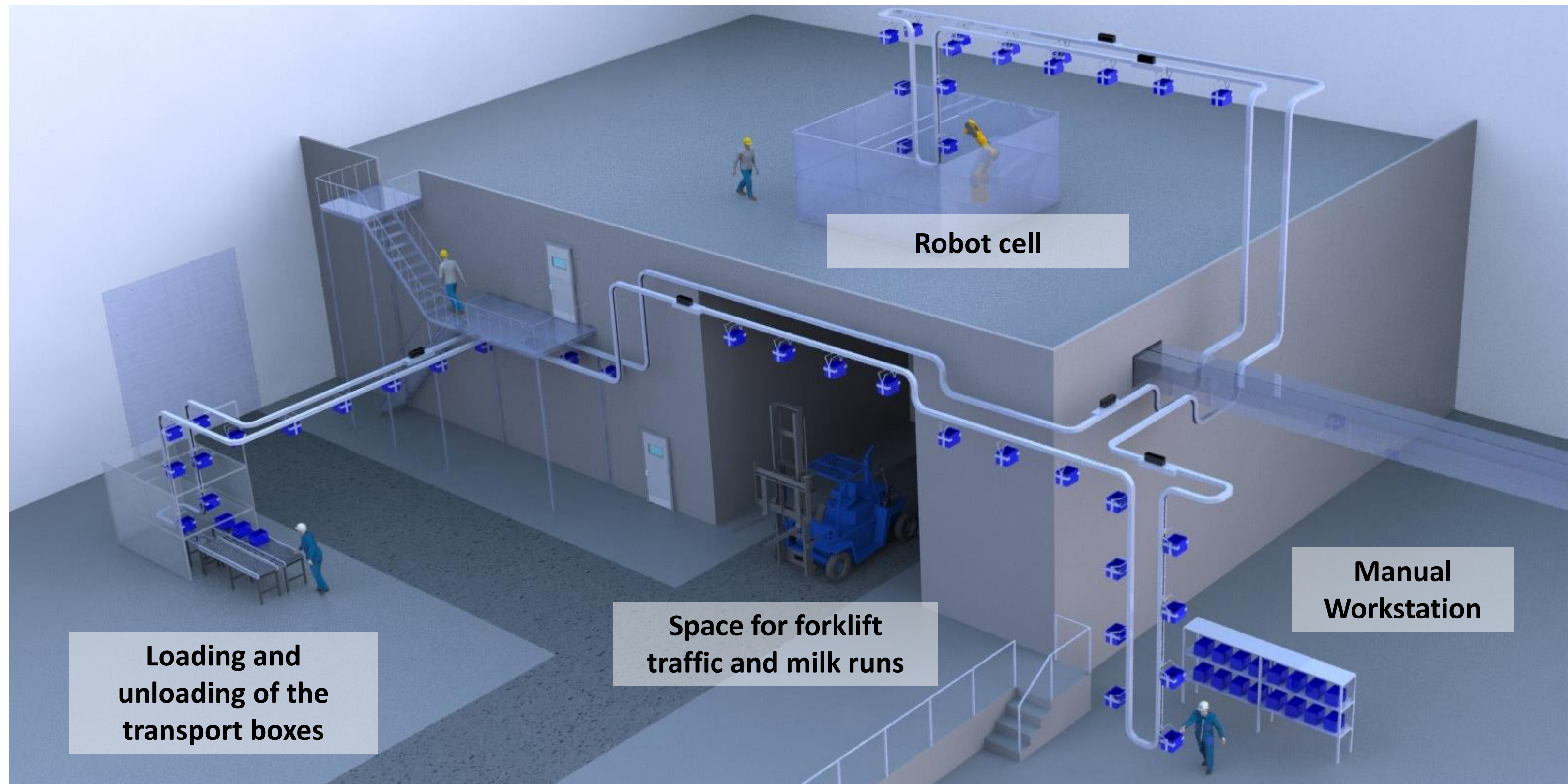


The flexible 3D conveyor system for your intralogistics

Application example 3: Transferring boxes in and out, connecting two workstations on two different floors with buffers



Application example 3: Transferring boxes in and out, connecting two workstations on two different floors with buffers

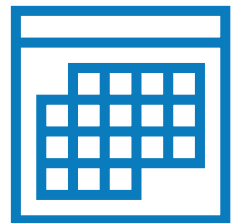




QuickMOVE stands for flexible conveyor technology and reliable partnership.



Our team combines experience in maintenance, mechanical engineering, construction, and the automotive industry to deliver solutions that fit your process.



From planning to commissioning and beyond, we provide you with maintenance and support as needed.



Headquarters Cologne
(Administration & Sales)



Our range of services

From planning to maintenance:

- Turnkey systems

- Individual solutions within General Service projects

- Component parts supply

Research and technology Center Hilden
(Testing & Production)



QuickMOVE – Efficiency in motion

We would be happy to
discuss your individual
solution with you.



Thomas Brüse
Managing Partner



+49 (0) 160 535 86 79



thomas.bruese@quick-move.de



www.quickmove.de



Rheingasse 34 · 50676 Köln



Bahnhofsallee 29 · 40721 Hilden